

# ROCÍO SANZ

SUITE HILOS  
para cuerdas

CONTRABAJO

ALESSANDRO BARES  
Edición crítica



FA  
Facultad de  
Artes

EAM  
Escuela de  
Artes Musicales

# Suite Hilos

para cuerdas

Rocío Sanz Quirós

## I

Contrabajo

**Andante** ♩ = 60

**6**

*f* *mf*

10 *mf* *f*

15 *mf*

20 *f*

24 *p subito* *f*

28 *mp*

33 *f*

The musical score for the Contrabajo (Double Bass) part of Suite Hilos, Part I, is written in 4/4 time with an Andante tempo of 60 beats per minute. The key signature consists of two flats (B-flat and E-flat). The score is divided into measures, with measure numbers 6, 10, 15, 20, 24, 28, and 33 indicated. The dynamics range from *f* (forte) to *mp* (mezzo-piano), including a *p subito* (piano subito) marking. The piece features various articulations, including accents, slurs, and triplets, and concludes with a repeat sign.

36

pizz.

arco

*f*



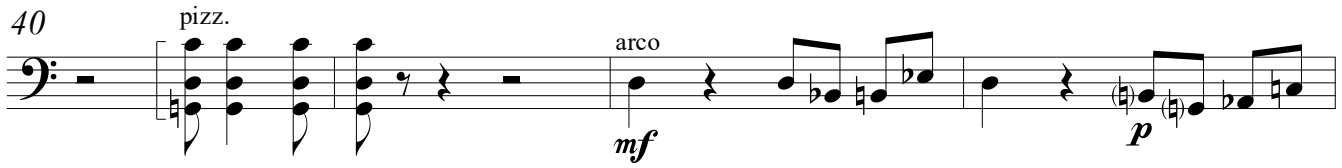
40

pizz.

arco

*mf*

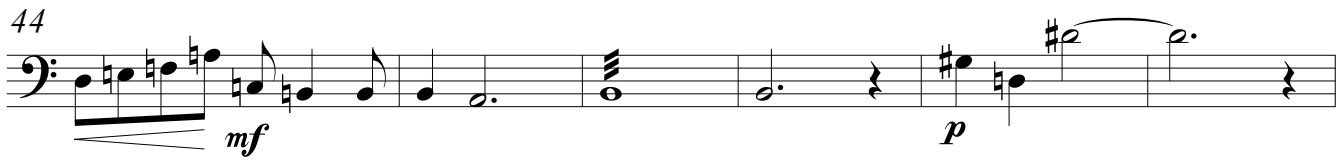
*p*



44

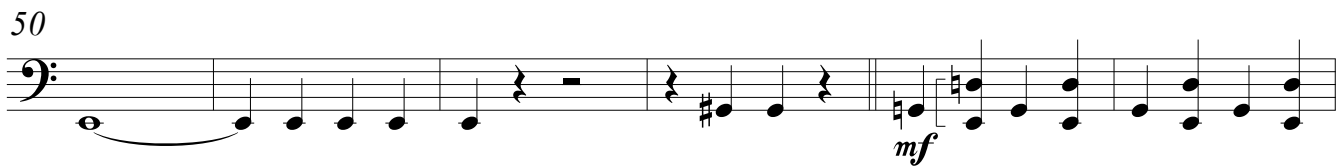
*mf*

*p*



50

*mf*



56

[*mf*]

*f*



63

5

*f*

pizz.



73

arco

*f*

*p*

*f*

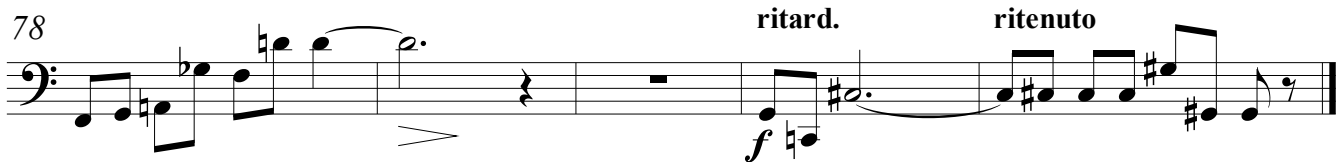


78

ritard.

ritenuto

*f*



## II

**Lento** ♩ = 50-54

5

## Contrabajo

**Lento** ♩ = 50-54

5

Contrabajo

The musical score for the Contrabajo (Double Bass) is written in bass clef with a common time signature (C). The tempo is marked 'Lento' with a quarter note equal to 50-54 beats per minute. The score begins with a five-measure rest, indicated by a large '5' above the staff. The first note is a half note G2, marked with a piano (*p*) dynamic. This is followed by a half note F2, a half note E2, and a half note D2. The final measure contains a half note C2, marked with a pianissimo (*pp*) dynamic. The notes are written on a five-line staff.

9

[illegible]

12

12

The musical notation for Example 12 is written on a single bass staff. It begins with a common time signature 'C'. The first measure contains a half note G2. The second measure contains a whole rest. The third measure contains a half note G#2. The fourth measure contains a half note F#2. The fifth measure contains a half note E2. The sixth measure contains a whole rest. The piece concludes with a double bar line.

16

[illegible]

23

23

*pp*

26

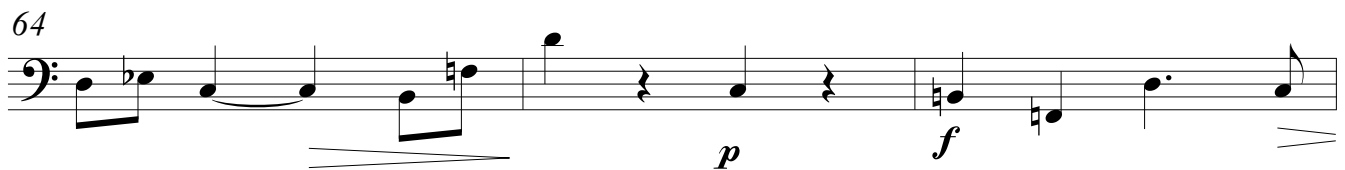
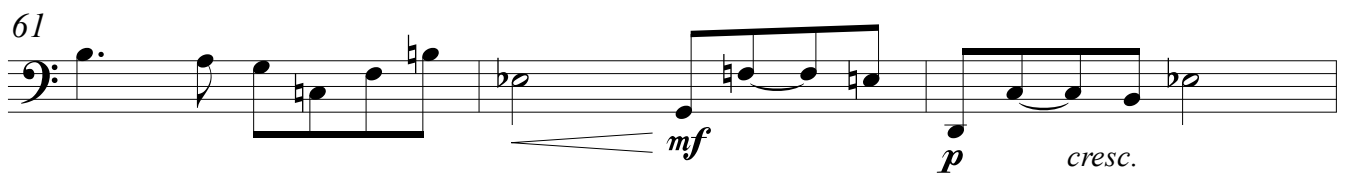
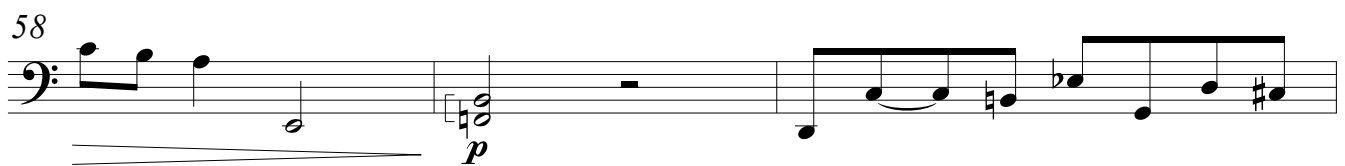
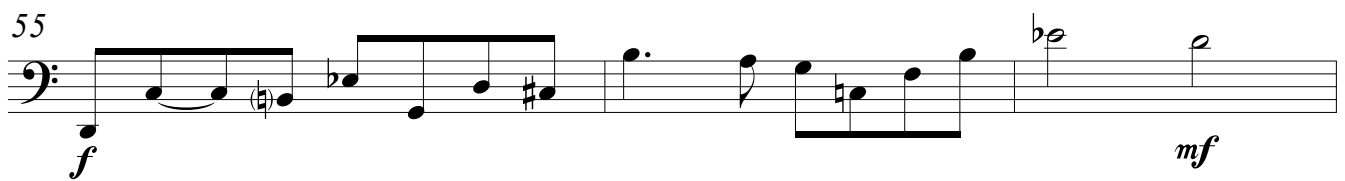
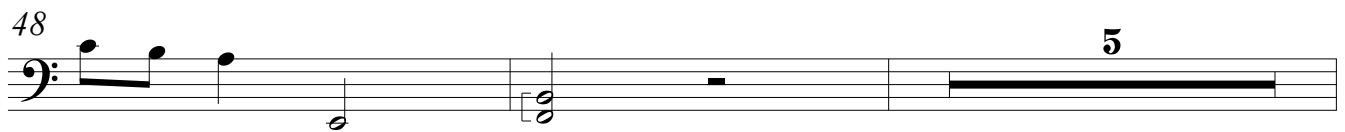
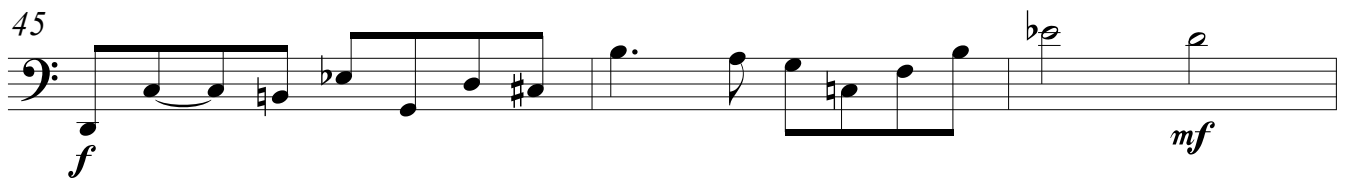
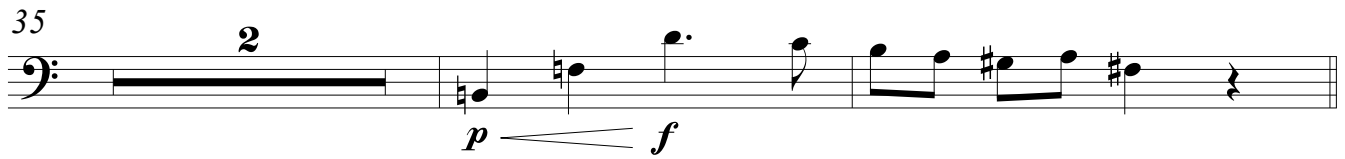
26

4

*mf*

32

[illegible]



### III

#### Rondo

**Allegro** ♩ = 104

Contrabajo

pizz. arco

**f** **p**

5 **f** **mf**

12 **p** **mf**

19 **p**

26 **p** **f** poco ritard.

32 Poco meno mosso **mf** **f**

38 **mf** **p**

43

48 ritard. **I Tempo** **f**

